



# D'Crypt TelePort

TelePort is a novel network security product designed fully in-house by D'Crypt Pte Ltd. It offers a highly secure and efficient way to connect telecommuters, branch offices, partners and suppliers back to the corporate network over the Internet, thereby bringing a host of business benefits. A typical TelePort implementation consists of a TelePort concentrator and a varying number of TelePort clients.

## Key features

**Virtual link encryptor** TelePort provides a **virtual wire** over the Internet mesh so as to connect a terminal securely to the corporate network. The terminal appears connected to the corporate network as though it is physically located in the corporate office. This allows for homogeneous network administration, thus improving efficiency and productivity. Remote terminals are subjected to the same security controls in the corporate network, effectively eliminating security risks brought about by delayed upgrades or obscure loopholes in remote networks.

**Ease of deployment** TelePort is a pure-hardware solution. After a one-time configuration, simply attach it to the terminal and the terminal will be automatically connected to the corporate network! No messy software setups and maintenance.

**Supports a wide variety of Internet protocols** Ethernet traffic frames from the terminal is encrypted and transported back to the TelePort concentrator where the reverse takes place. Thus, TelePort is able to support ANY protocol that runs over Ethernet. Examples include TCP/IP, POP, HTTP, FTP, SMTP, SNMP, RIP, OSPF, DHCP, IPX, AppleTalk, and many others.

**Platform independence** All cryptographic/tunneling capabilities are implemented within the TelePort device. No special software installation is necessary on the terminal. Thus, terminals based on all popular operating systems, such as Microsoft Windows, Linux, Solaris, AIX, can use TelePort to connect to the corporate network.

**Minimum change to existing network infrastructure** TelePort is designed as a bump-in-the-wire solution. Just plug TelePort at appropriate points in the network and remote terminals will be able to connect to the corporate network securely. Minimal or no change to the network infrastructure is envisaged.

**Failover support** Up to two TelePort concentrators can be specified in the TelePort client. The client will automatically tunnel to whichever concentrator that is available.

## Security

FIPS 140-2 Level 3 certified *d'Cryptor* QE cryptographic core (Certificate No. 465)

Secure storage of keys that are erased upon tamper detection  
AES 256-bit encryption

Two-way challenge-response crypto handshake

Optional password authentication

## Performance

3 Mbps

## Technical Specifications



TelePort Client

TelePort Client	CLT-E1	CLT-M1	CLT-C1
<b>Ports</b>			
10BaseT LAN	√	√	√
10BaseT WAN	√	-	√
RJ-11	-	√	√
USB 1.1	-	√	√
3-wire RS-232	√	√	√
9-wire RS-232 (External modem support)	-	√	√
<b>Indicators</b>	6 LEDs (PWR, INET, TNL, LAN, WAN, MDM)		
<b>Supply</b>	5V DC	USB	USB
<b>Battery</b>			
Type	CR2330		
Duration	1 year		
<b>Environment</b>			
Temperature	0-70°C		
Humidity	5-90% non-condensing		
<b>Dimensions (W x D x H)</b>	103 mm x 92 mm x 27 mm		



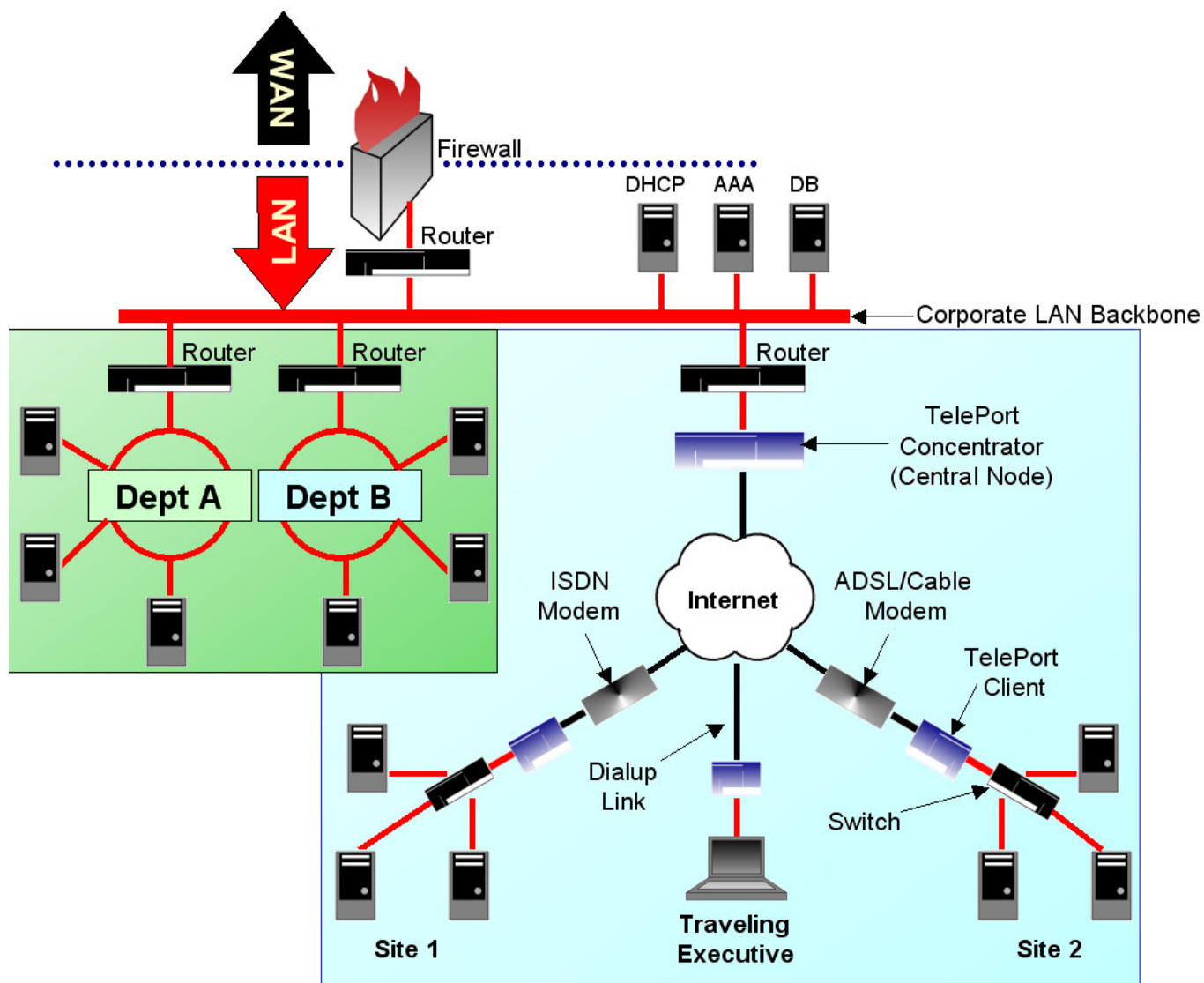
TelePort Concentrator

TelePort Concentrator	CON-E1-8	CON-E1-16*	CON-E1-32*
<b>Ports</b>			
10BaseT LAN		√	
10BaseT WAN		√	
3-wire RS-232		√	
<b>Indicators</b>	4 LEDs (PWR, INET, LAN, WAN)		
<b>Clients supported</b>	8	16	32
<b>Supply</b>	120-240 VAC		
<b>Battery</b>			
Type	CR2330		
Duration	1 year		
<b>Environment</b>			
Temperature	0-70°C		
Humidity	5-90% non-condensing		
<b>Dimensions (W x D x H)</b>	482 mm x 83 mm x 44 mm		

\* Based on modified *d'Cryptor* QE.

Specifications subject to change without notice

## Deployment Scenario



Another quality product by:

**D'Crypt Pte Ltd**

20 Ayer Rajah Crescent, #08-08, Singapore 139964.

DID: +65 6773 9016 FAX: +65 6873 0796

URL: <http://www.d-crypt.com>

EMAIL: [teleport@d-crypt.com](mailto:teleport@d-crypt.com)